

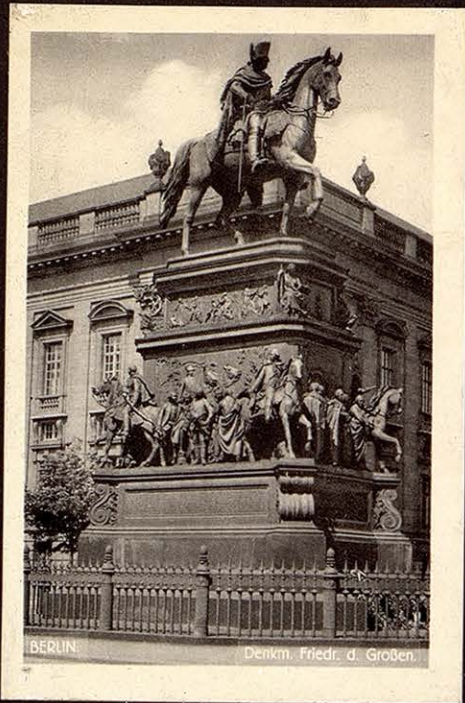
PHOTOGRAPHUS

A decorative flourish consisting of a horizontal line with a central, ornate, downward-pointing scrollwork element.

2015-16 044

Album 2

— STORAGE POCKET FOR PRINTS AND NEGATIVES —



BERLIN. Denkm. Friedr. d. Großen.



BERLIN CHARLOTTENBURG. Funkturm.



BERLIN. Siegessäule.

*Germany*



BERLIN. Zeughaus.



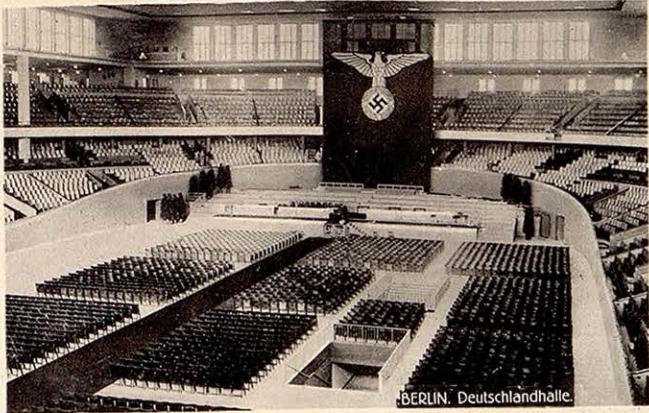
BERLIN. Schloß.



Berlin. Schloß mit Begasbrunnen.



BERLIN  
Denkmal Kaiser Wilhelm I.



BERLIN, Deutschlandhalle.



BERLIN, Alexanderplatz.



BERLIN  
Wache vor dem Ehrenmal.



BERLIN  
Reichstagsgebäude, Siegessäule.



BERLIN  
National Galerie.



BERLIN, Deutschlandhalle.



BERLIN  
Reichsluftfahrtministerium.



BERLIN  
Potsdamer Platz, Leipziger Str.

BERLIN



BERLIN, Dom, Lustgarten, Altes Museum.



BERLIN, Gesamtansicht.



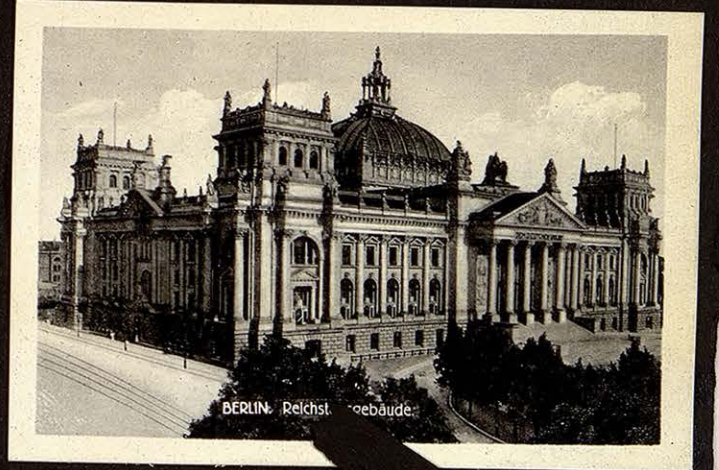
BERLIN, Universität.



BERLIN, Reichskanzlei.



BERLIN, Königsplatz.



BERLIN, Reichstgebäude.



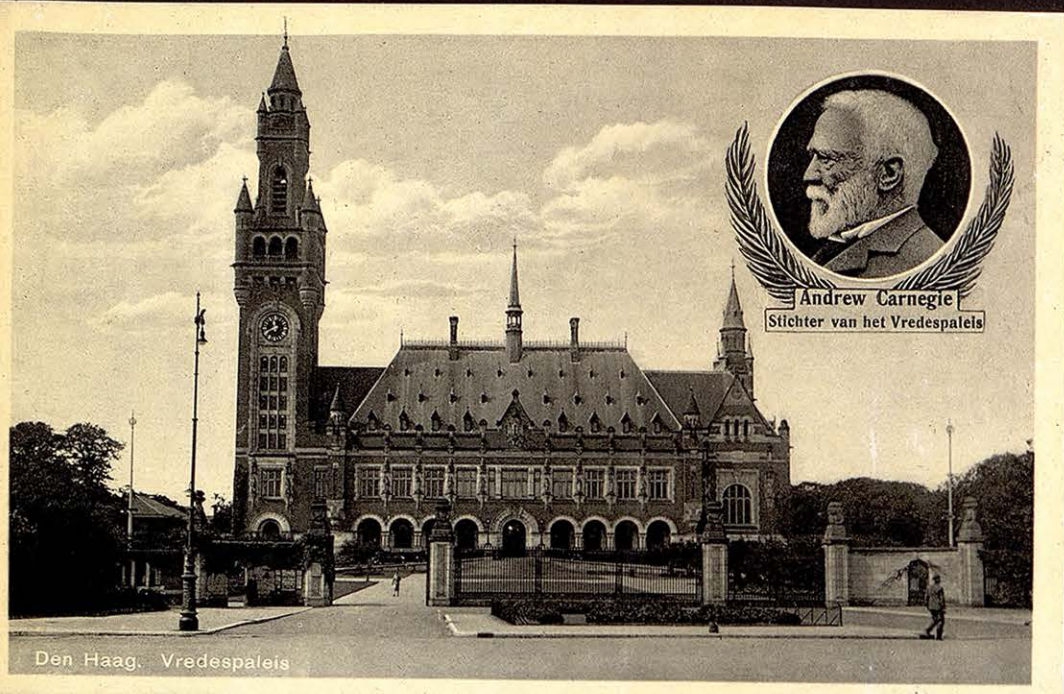
BERLIN, Brandenburger Tor.



BERLIN, Kaiser Friedrich Museum.



BERLIN, Lebensglocke a. d. Donhoffplatz.



Den Haag. Vredespaleis



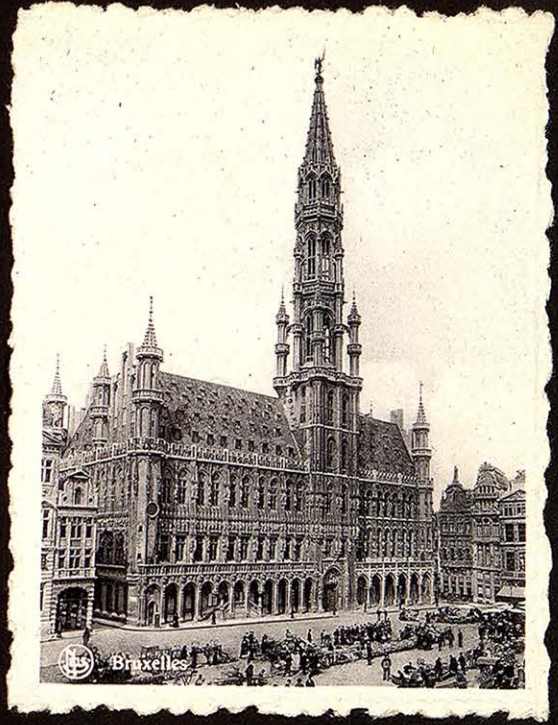
Rotterdam, Maas (Oude Hoofd).



Groeten uit de Bloembollenvelden.



WATERMOLENS BIJ ALKMAAR









13. - ANTWERPEN. — Lyrisch Tooncel et Fränkrykiaan  
ANVERS. — Théâtre Lyrique et Avenue de France



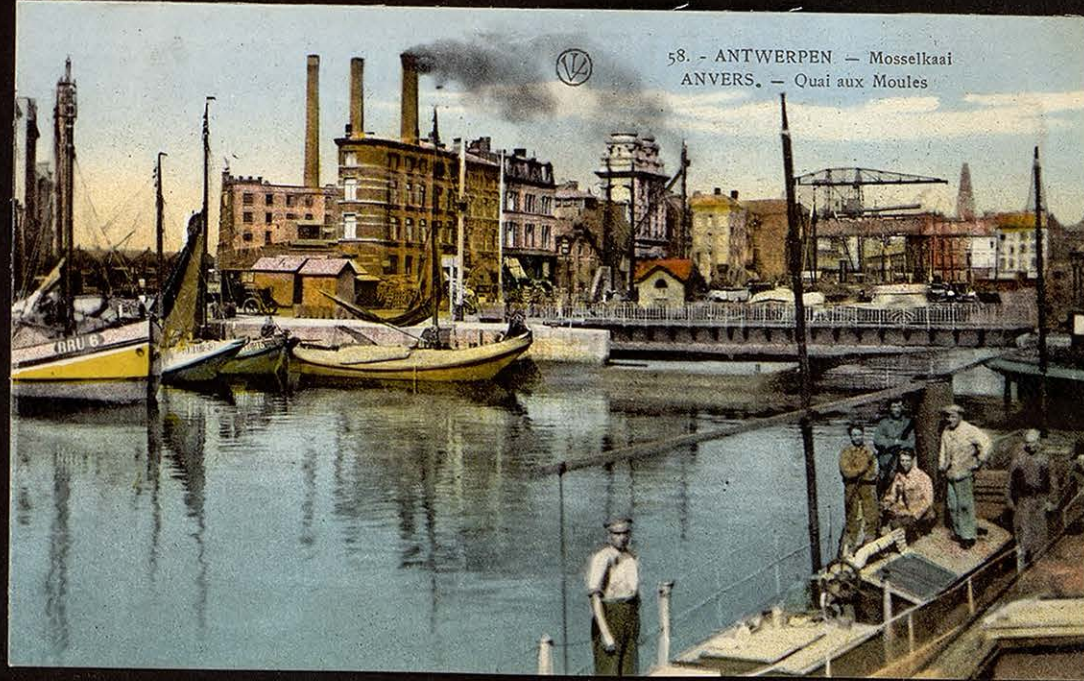
43. - ANTWERPEN. — Museum « Plantin »  
ANVERS. — Musée « Plantin ».



14. - ANTWERPEN. — Koninklyk Atheneum - Viktorieplaats.  
ANVERS. — Athénée Royal. - Place de la Victoire



58. - ANTWERPEN — Mosselkaai  
ANVERS. — Quai aux Moules

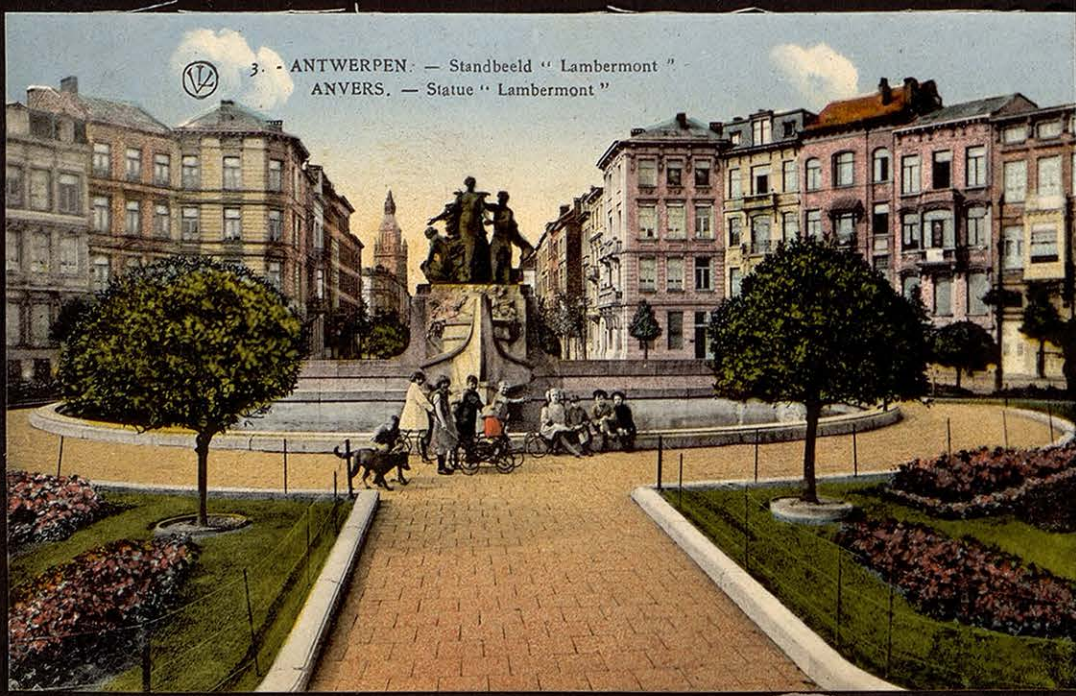




22. - ANTWERPEN.  
Groenplaats (Standbeeld Rubens en Hoofdherk  
ANVERS. — Place Verte (Statue Rubens et Cathédrale)



62 MARSEILLE - L'Ascenseur de N. D. de la Garde



3. - ANTWERPEN: — Standbeeld "Lambermont"  
ANVERS. — Statue "Lambermont"



MARSEILLE -- Un coin du Vieux-Port et N.-D. de la Garde



# ROTISSERIE NORMANDE

DU GRAND CAFÉ TERMINUS

TÉLÉPH.: EUROPE 49-10

PARIS

108. RUE SAINT-LAZARE

*N'as-tu jamais vu Marseille  
Ne t'en fais pas  
soulève le vase  
et tu le  
verras sans  
te déranger*



*Madeja*



DEUTSCHE LUFTHANSA

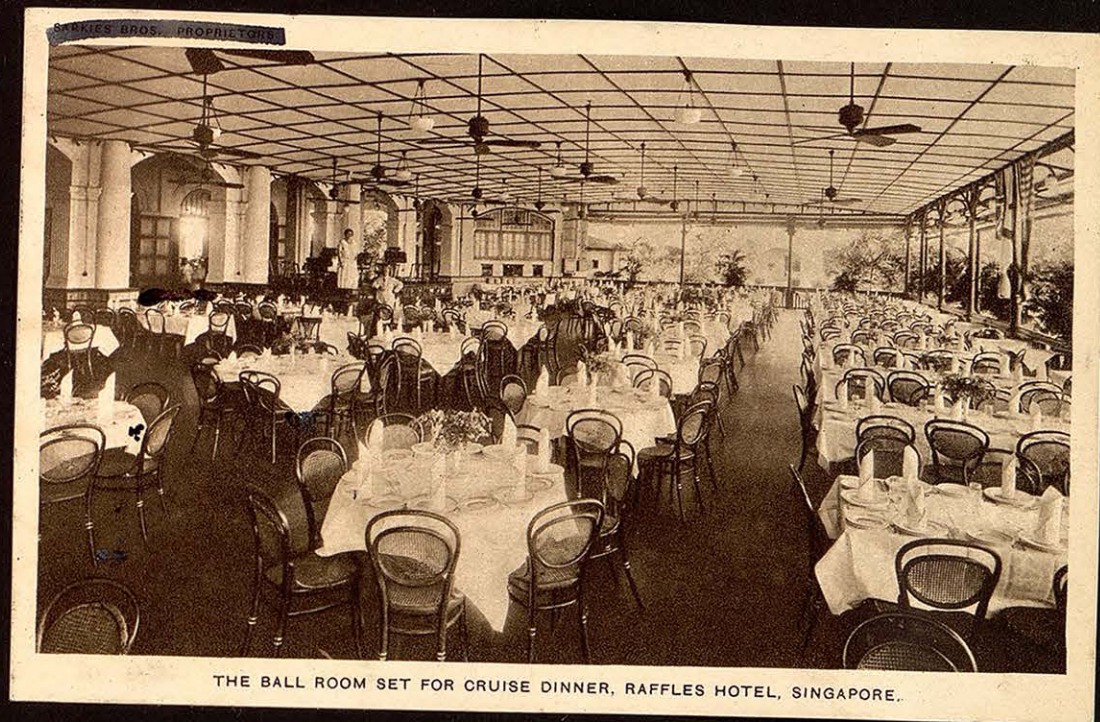


MARSEILLE . Le Vieux port vu du Pont Transbordeur

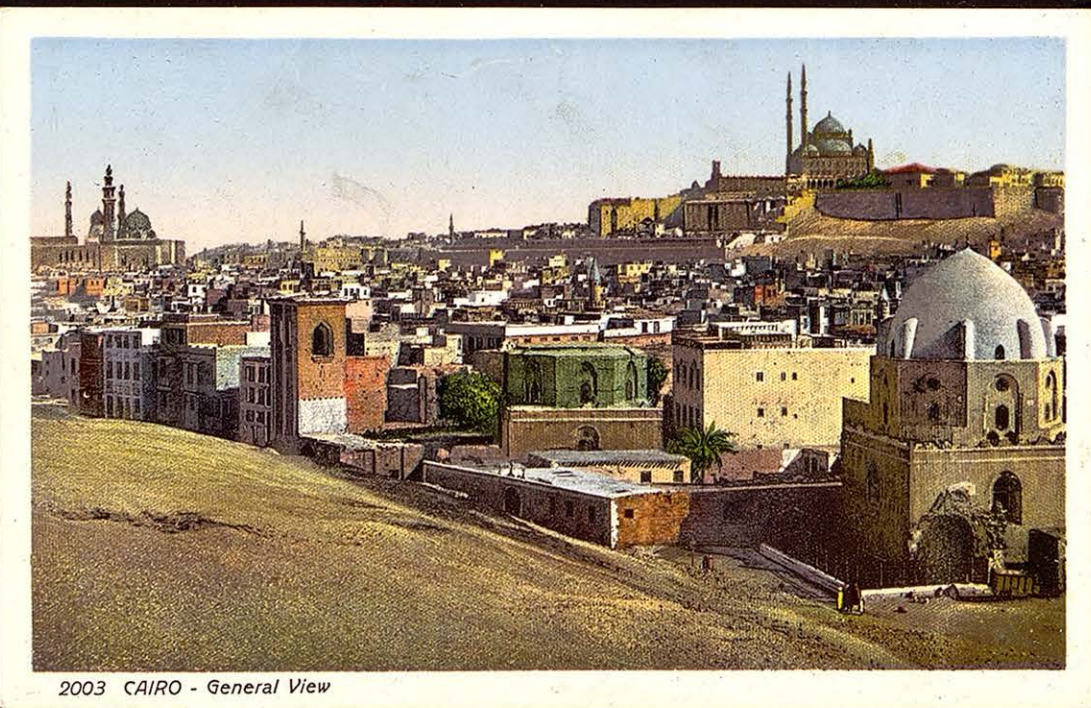


1049

*Cairo - Sphinx and Pyramids*



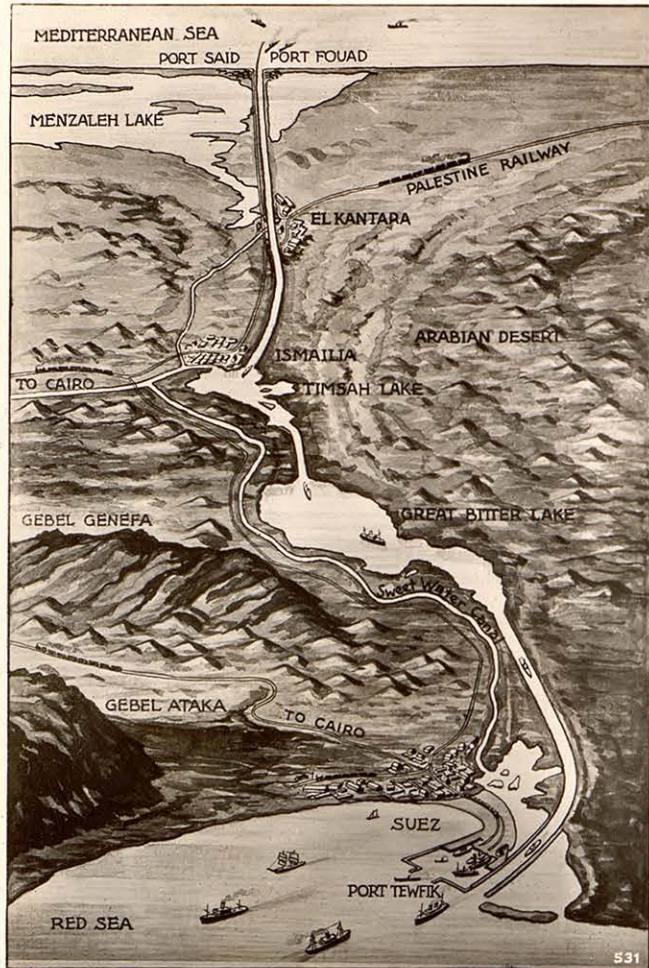
THE BALL ROOM SET FOR CRUISE DINNER, RAFFLES HOTEL, SINGAPORE.



2003 CAIRO - General View



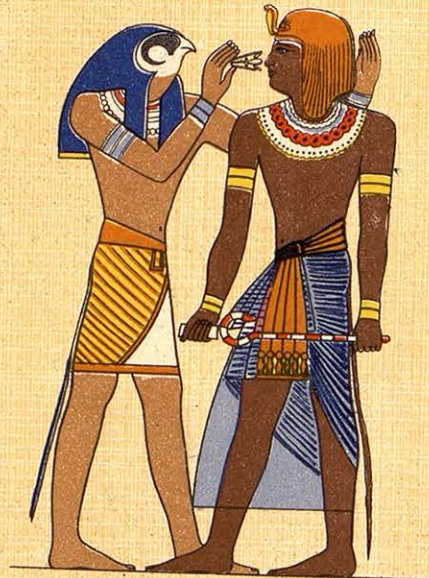
THE MAIN DINING HALL, RAFFLES HOTEL, SINGAPORE.



*Port Said: The Suez Canal*



THE SACRED SCARABAEUS,  
SYMBOL OF ETERNAL LIFE

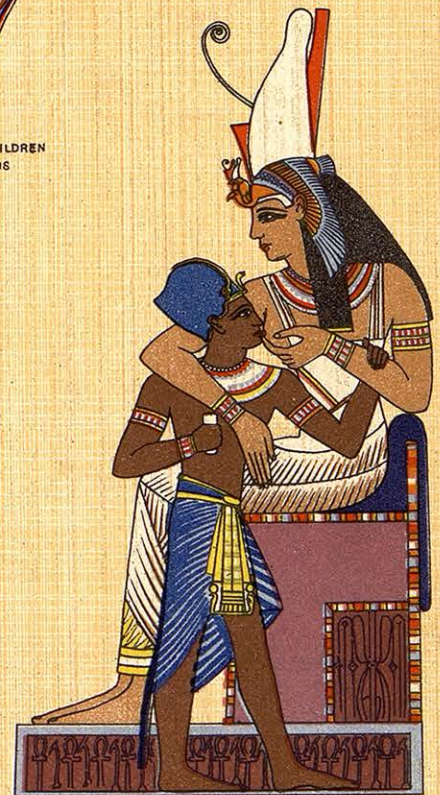


MONT SETI I

THE FALCON-HEADED MONT, WHO HOLDS THE  
HIEROGLYPH FOR LIFE TO THE NOSE OF KING SETI  
RELIEF FROM ABYDOS TEMPLE



THE FOUR CHILDREN  
OF HORUS



ISIS, GODDESS OF PHILAE, NURSING THE  
INFANT HORUS  
(WALL DECORATION AT ABYDOS TEMPLE)



KING RAMSES II,  
SACRIFICING TO THE GODS



OSIRIS, THE GOD OF VEGETATION  
AND PROSPERITY,  
FATHER OF HORUS



AMON-RA

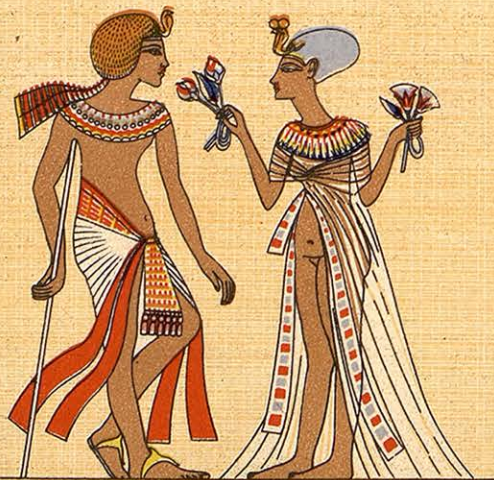


NECHBET, THE  
SACRED AND  
PROTECTING VULTURE



SETI I

SCENE OF SACRIFICE, RELIEF FROM ABYDOS TEMPLE



KING AMENOPHIS IV (ECHNATON) AND QUEEN NOFRETETE  
(18TH DYN. 1375 - 1368)



AMENOPHIS IV AND HIS QUEEN  
WORSHIPPING THE SUN.  
(WALL PAINTING FROM TEL EL AMARNA)



SETH AND HARENDOTES



THE KING'S SACRIFICE

MURAL DECORATIONS FROM EDFU TEMPLE



A NILE - DEITY WITH LOTUS FLOWERS AND THE BOWS OF LIFE



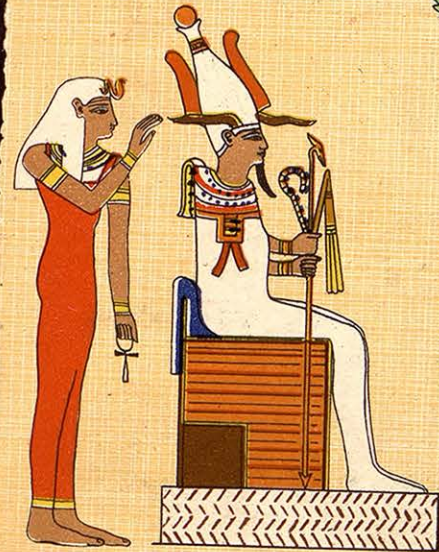
THE WINGED SERPENT  
ROYAL ENSIGN OF THE  
PHAROHS



TI A HIGH COURT OFFICIAL  
OF MEMPHIS, SAILING ON THE NILE



THE WINGED SUN



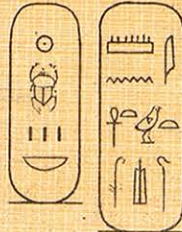
OSIRIS, THE GOD OF THE DEAD AND  
FATHER OF HORUS, HIS TOMB AT ABYDOS



KING SETHOS I,  
SACRIFICING TO OSIRIS



KING TUTANKHAMUN, WHO DIED AT THE AGE OF 18,  
AFTER A 7 YEARS REIGN  
(18TH DYN. 1358 - 1350)  
FROM THE KING'S THRONE CHAIR, CAIRO MUSEUM



HARPIST OF THE NEW EMPIRE



ANUBIS, THE JACKAL  
HEADED GOD OF UPPER  
EGYPT AND LOCAL GOD  
OF THE DEAD

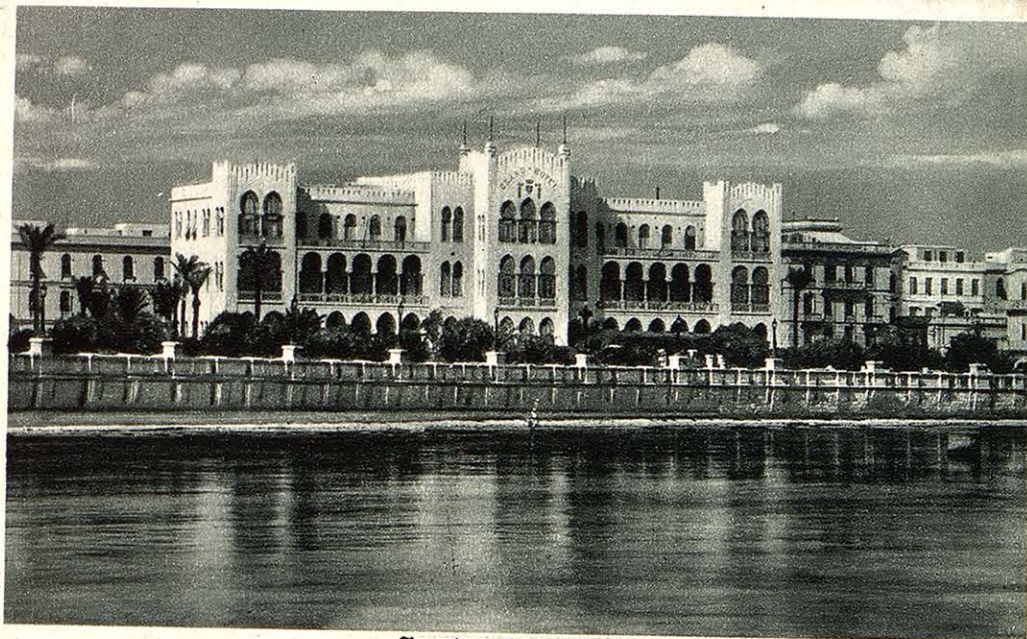


A WINGED DEITY, PROBABLY ISIS,  
PROTECTING THE MUMMY OF KING HAREMHAB  
(19TH DYN. 1350-1315)  
(GRANIT SARCOPHAGUS THEBES)





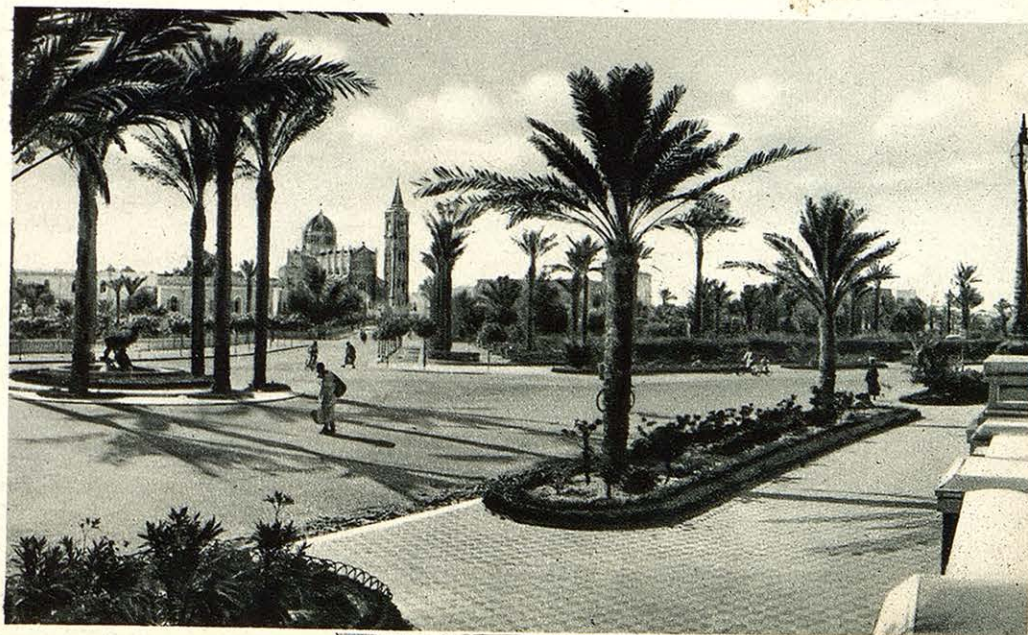
*Tripoli - Panorama e Moschea Caramanli.*



*Tripoli - Grand Hôtel.*



*Tripoli - Lungomare Conte Volpi.*



*Tripoli - Parco Principe Umberto.*



*Tripoli - Lungomare Conte Volpi.*



*Tripoli - Fontana della Gazzella.*



*Tripoli - Piazza Italia.*



*Tripoli - Corso Vittorio Emanuele.*



Tripoli - Palazzo di S. E. il Governatore.



Tripoli - Bastione S. Giorgia e Piazza Castello.



ALGER

ALGER

©im



ALGER

ALGER

©im

DANCING-JAZZ  
- SALOON -

OPEN ALL NIGHT  
T. COLBERT 03-60

BEST ENGLISH AND AMÉRICAN DRINKS

# ELEPHANT & CASTLE

118. Rue de la République, 118 - MARSEILLE

KNOWN ALL OVER THE WORLD

ALL MONEY EXCHANGED

R. C. Marseille 111.841

# Panam-Bar

○  
Consommations  
de Marques  
○

- 82 -

Rue de la République

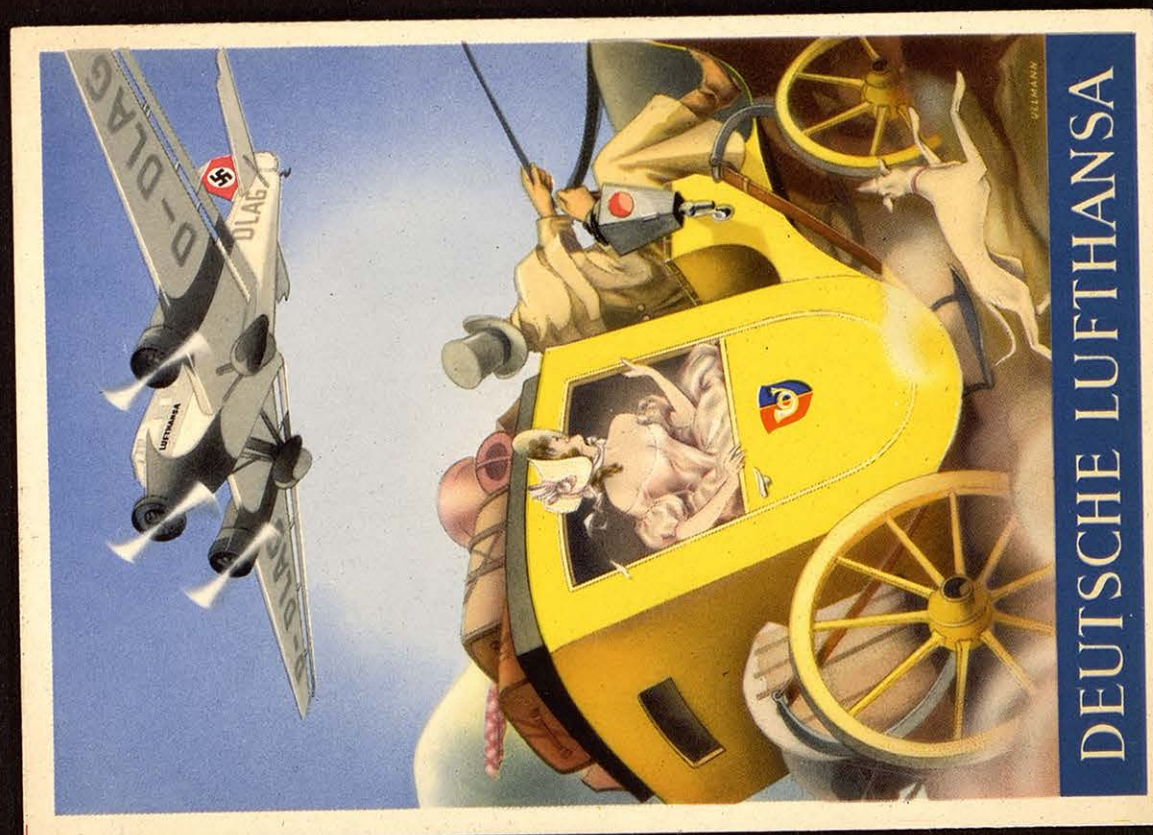
MARSEILLE

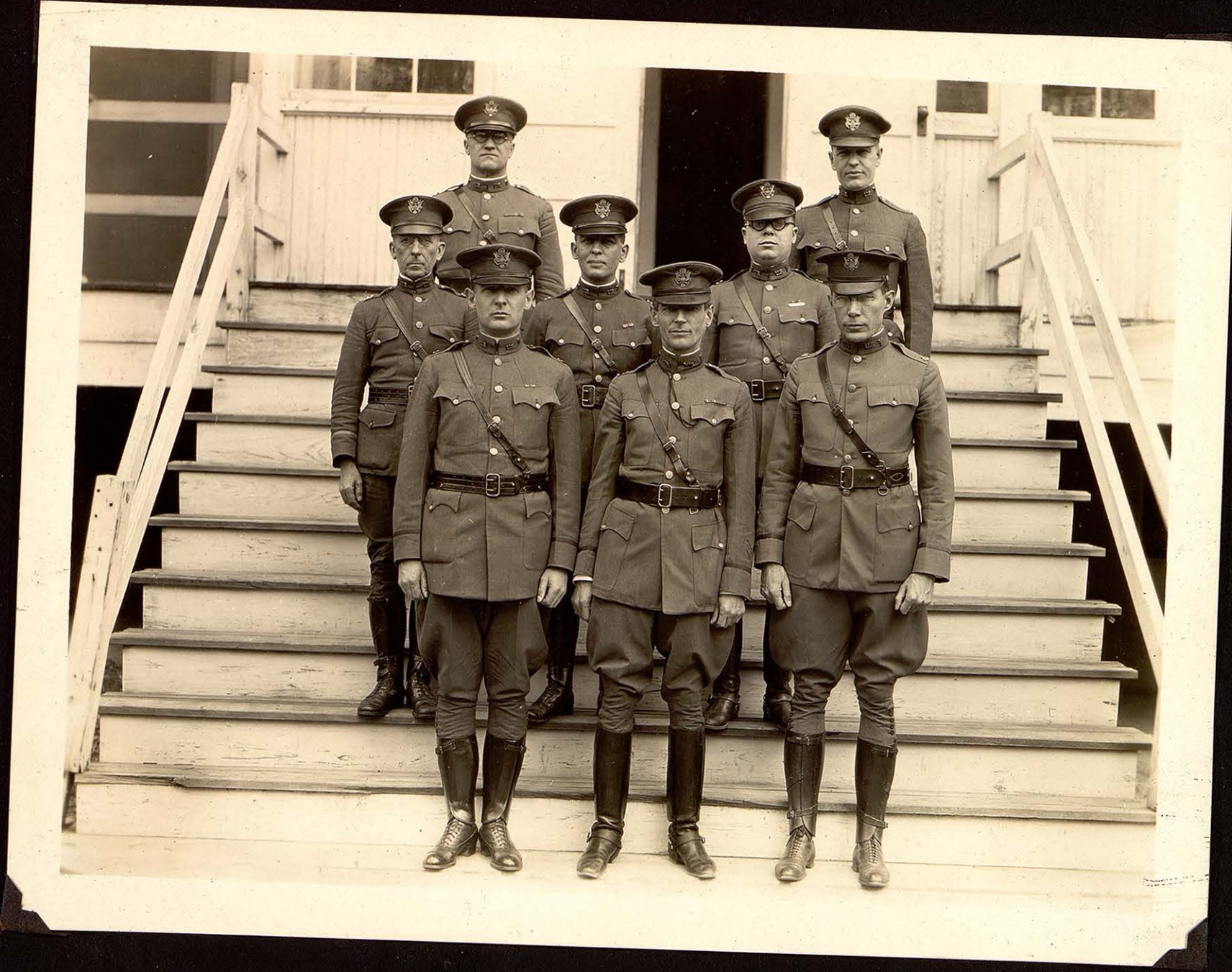
Tél. Colbert 08-93

## Lucien Piéri

Propriétaire

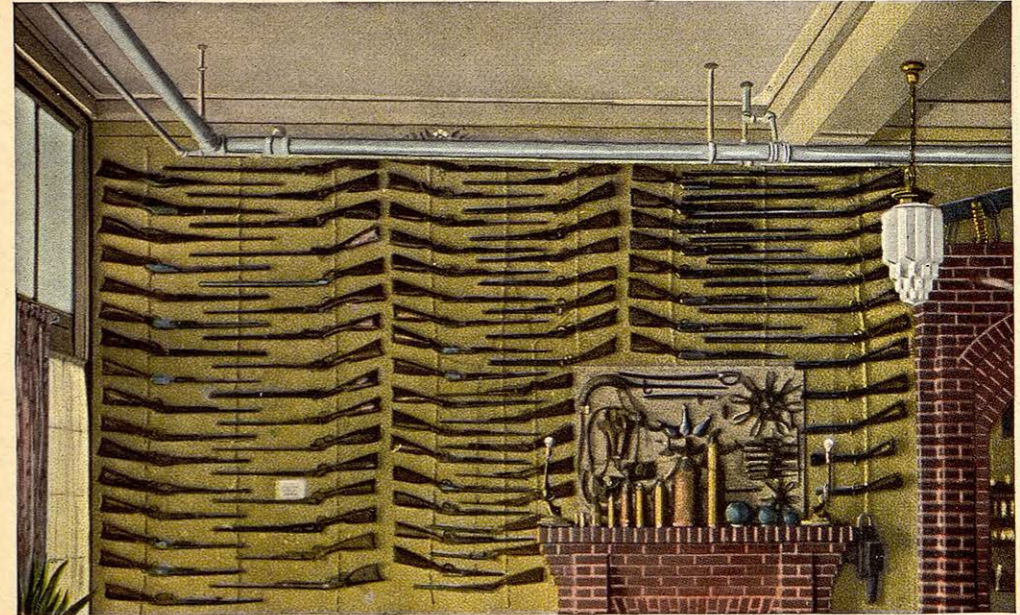
R. C. M 112.912







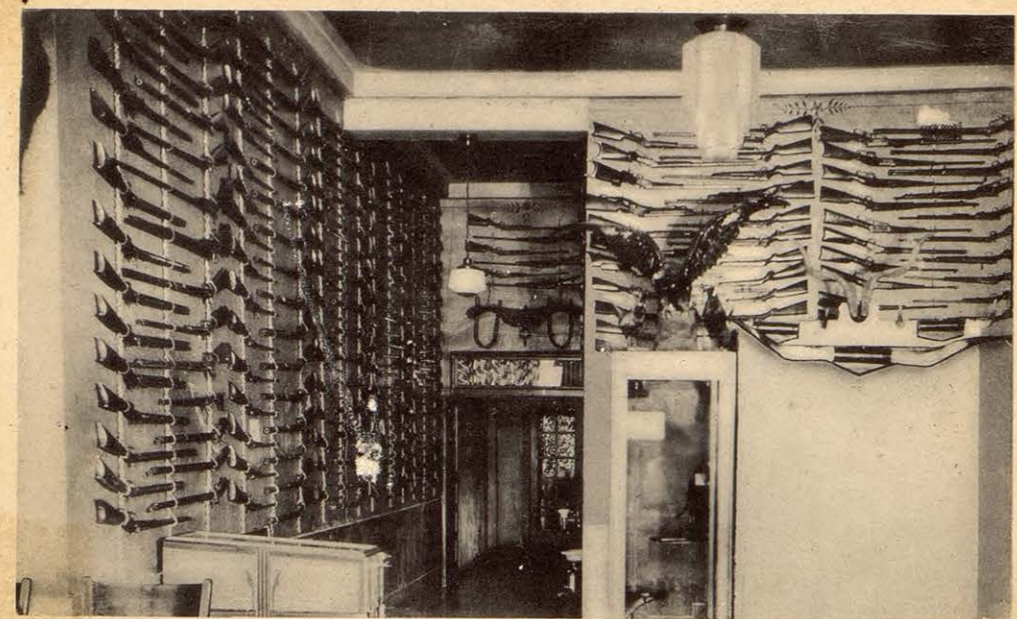
J. M. Davis Gun Collection, Largest Individual Gun Collection in U. S. A.



Hotel Mason Lobby, Claremore, Okla.

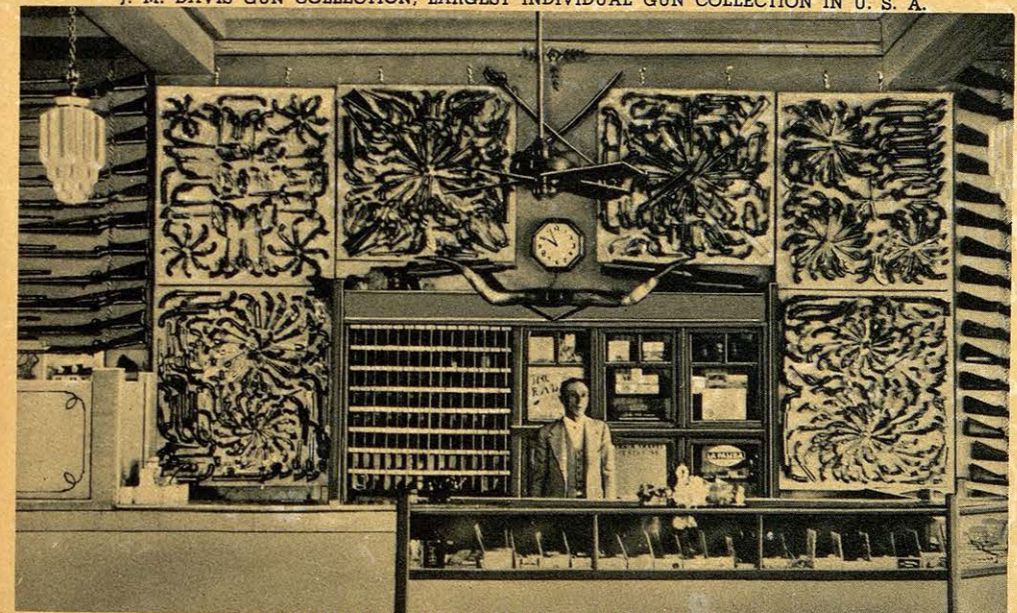
8A330-N

J. M. DAVIS GUN COLLECTION, LARGEST INDIVIDUAL GUN COLLECTION IN U. S. A.



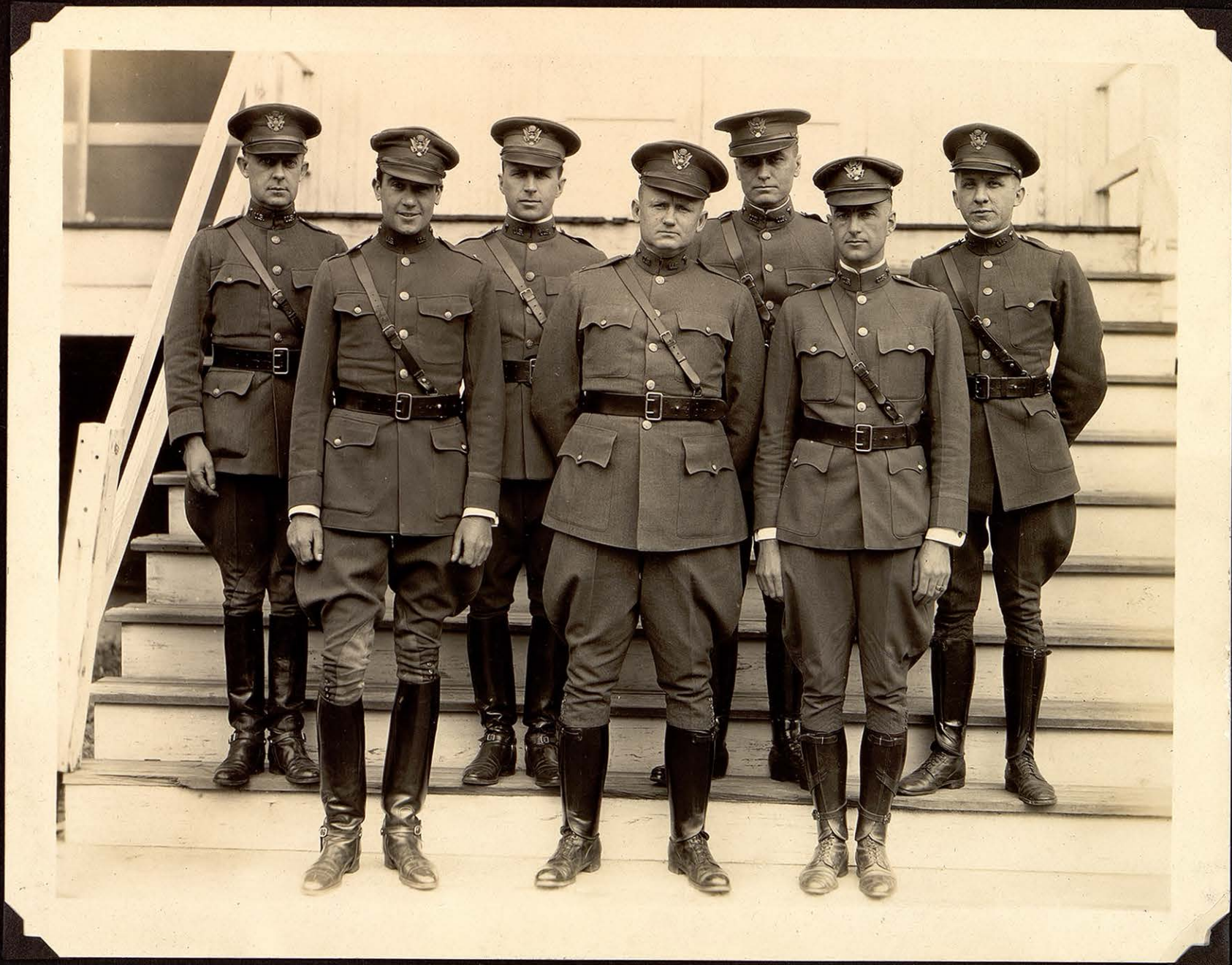
MASON HOTEL COFFEE SHOP, CLAREMORE, OKLAHOMA

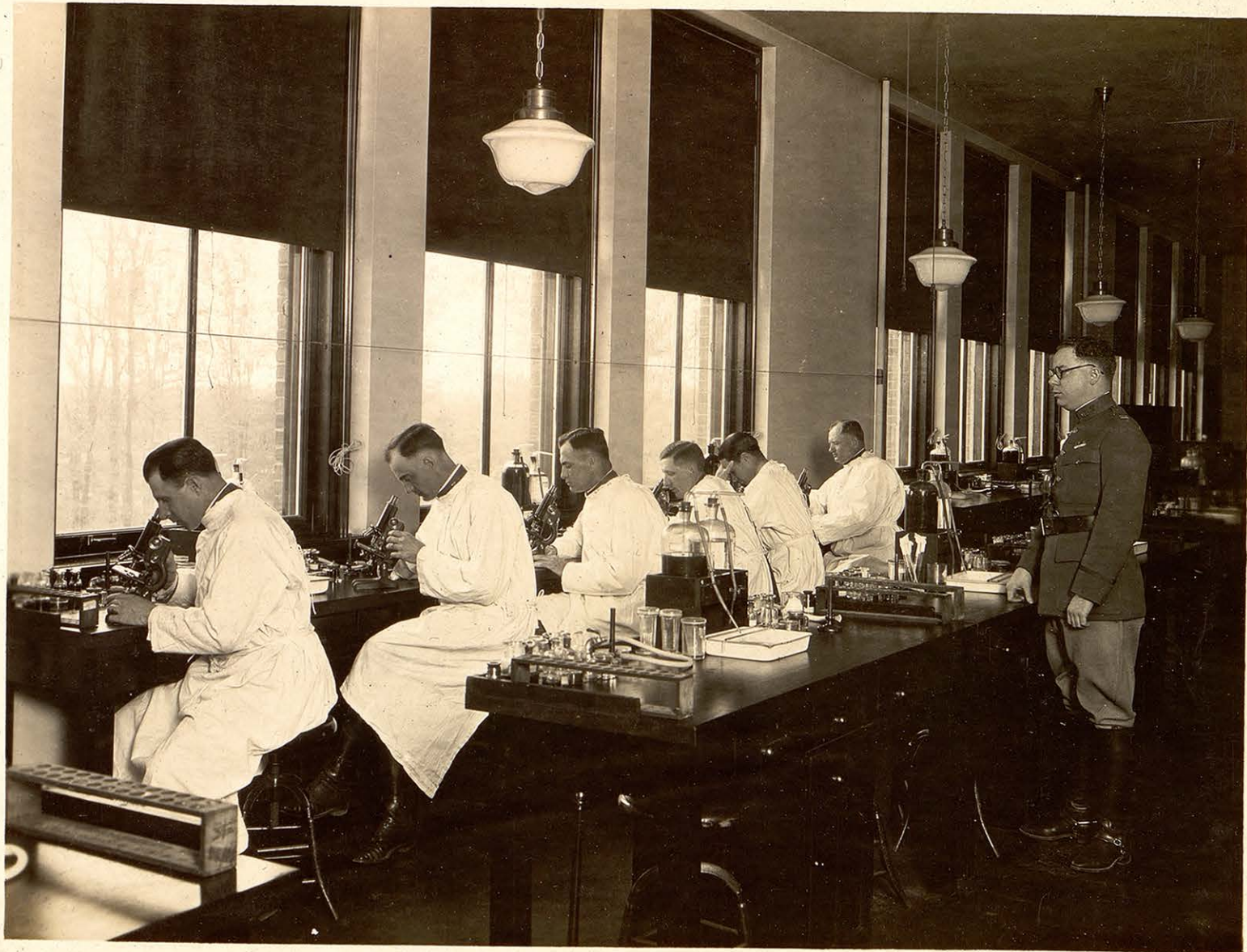
J. M. DAVIS GUN COLLECTION, LARGEST INDIVIDUAL GUN COLLECTION IN U. S. A.



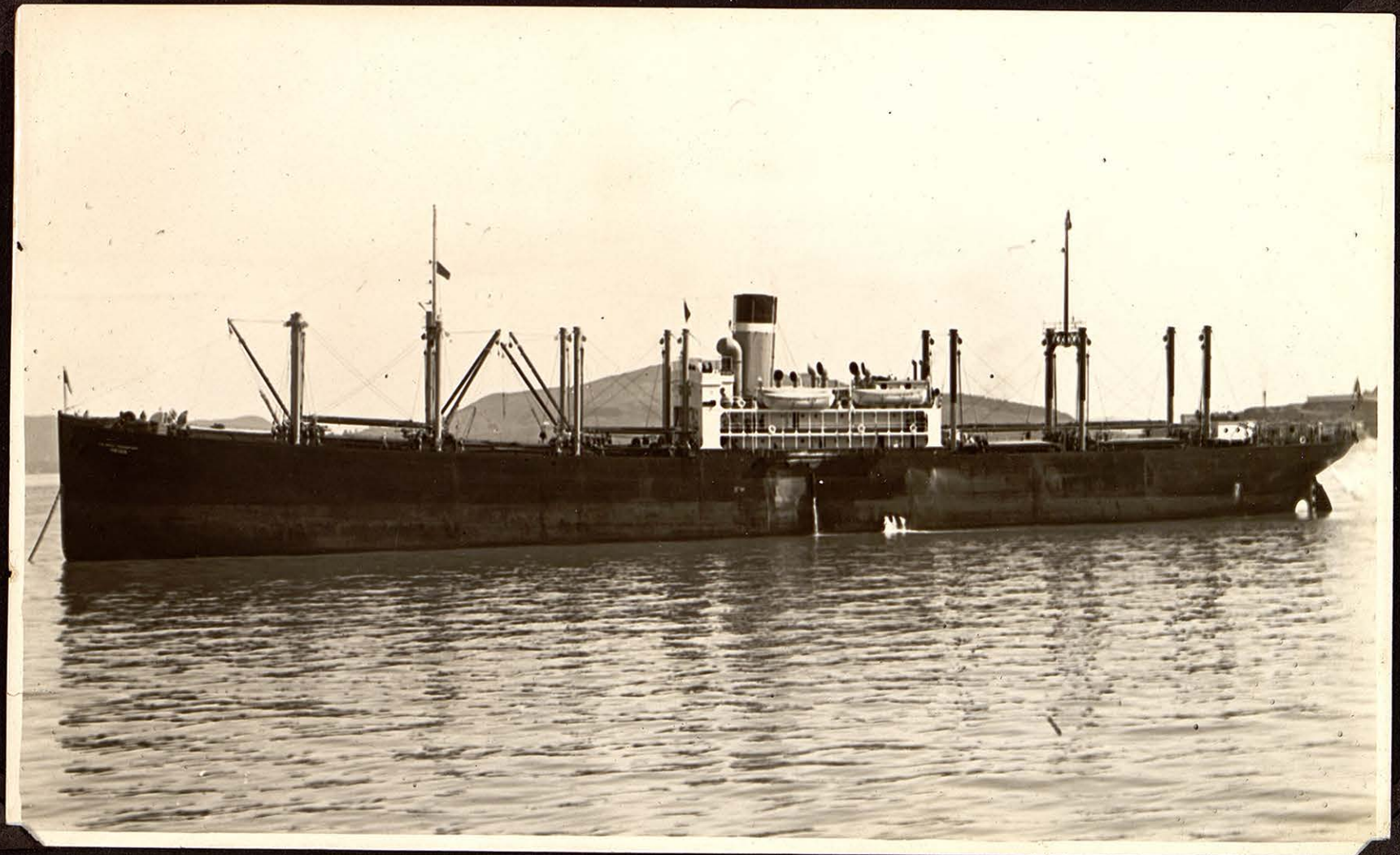
HOTEL MASON LOBBY, CLAREMORE, OKLA.

D-9867

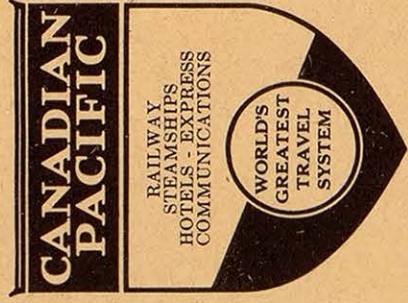




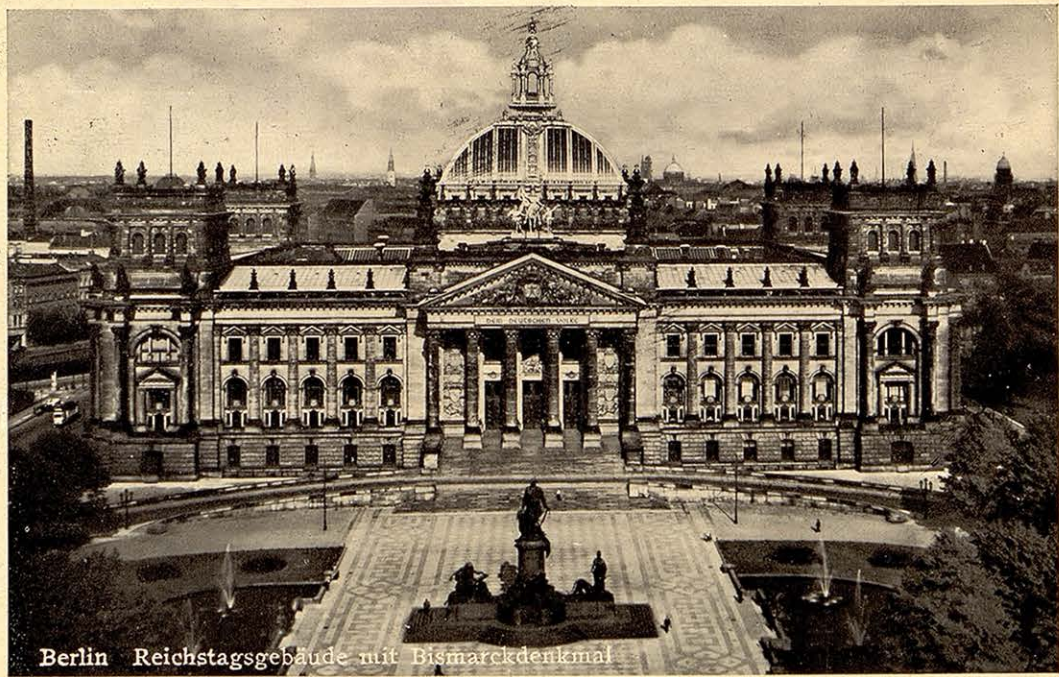




ROUND-THE-WORLD  
MAP



SHOWING  
WORLD-WIDE  
CONNECTIONS



Berlin Reichstagsgebäude mit Bismarckdenkmal



Berlin, die Ost-West-Achse Im Festschmuck



A:B. SVENSKA  
OSTASIATISKA  
KOMPANIET

THE SWEDISH EAST ASIATIC COMPANY LTD

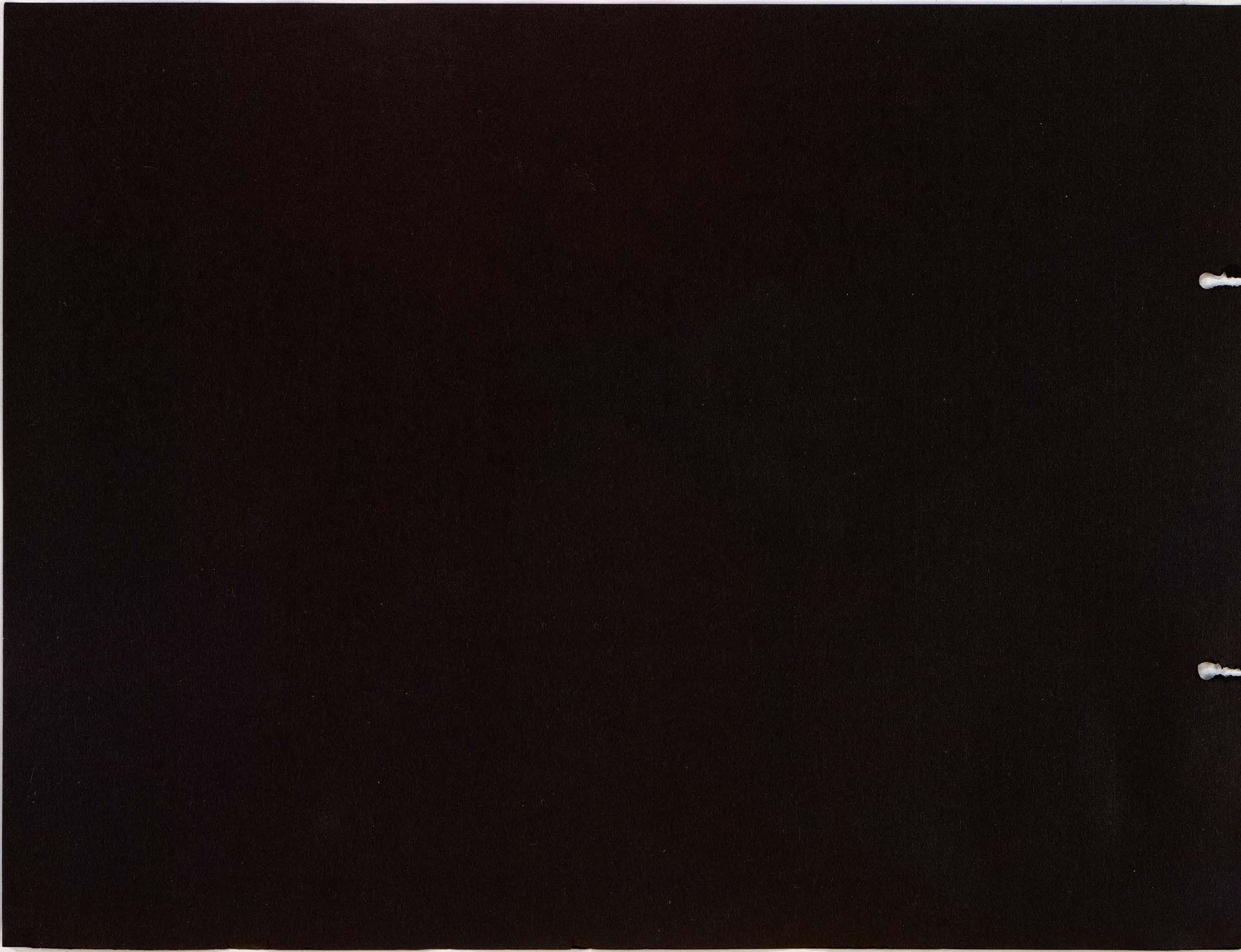
WANTED  
BAGGAGE

GÖTEBORG  
SWEDEN



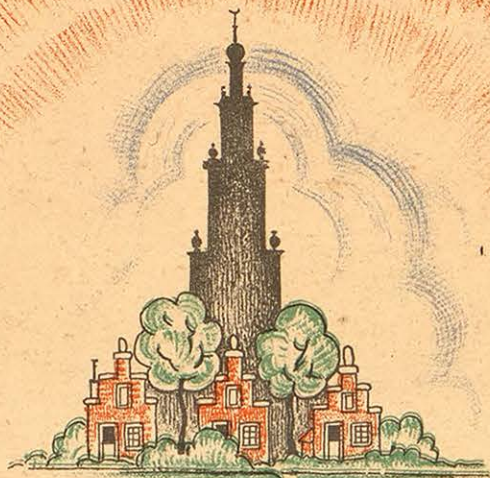
ANTONROHS, S.B.G.





# LA HOLLANDE

(DONT LE CARLTON HÔTEL D'AMSTERDAM EST LE CENTRE)



LE PAYS OÙ DES CHEMINS SINUEUX  
TRAVERSENT LES RIANTS PÂTURAGES

OÙ LE MOYEN ÂGE ROMANESQUE SE TROUVE  
EN COMPAGNIE DE LA JOIE MODERNE

OÙ DE VASTES PLAINES ABOUTISSENT  
À UN CHARMANT HORIZON ET OÙ L'ON  
TROUVE DES COUTUMES VRAIMENT  
ORIGINALES

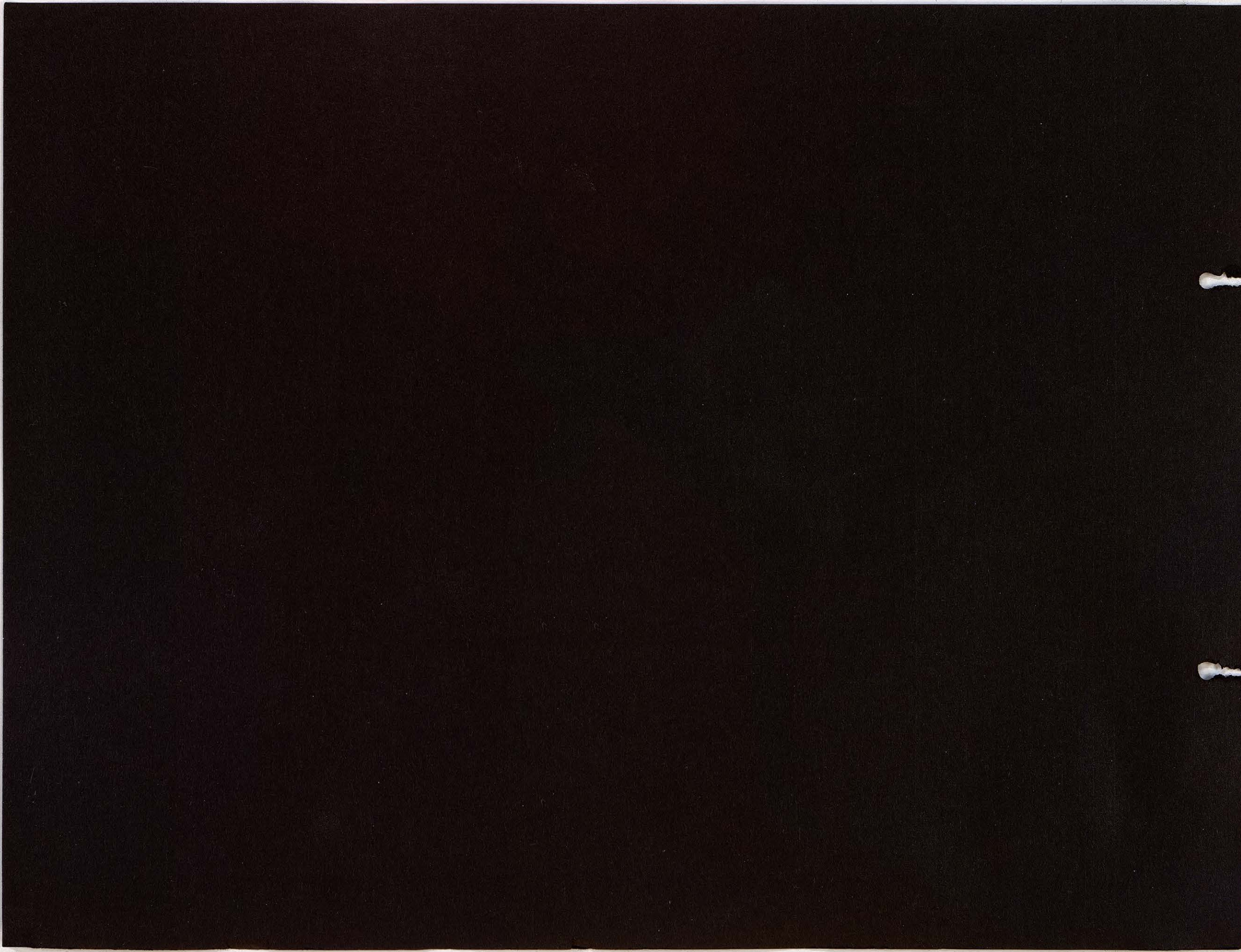
CARLTON-HOTEL  
AMSTERDAM

english

# BERLIN



HOTEL  
ESPLANADE





# REICHSHOF HAMBURG



**KIRCHENALLEE 34/36**  
direkt an der Ankunftseite  
des Hauptbahnhofes

**1910** **1935**

**25 Jahre**



