

PHOTOGRAPHS

of Frank O. Hershey  
2730 3rd Ave San Diego 03

2015-16-094

14/16/094

Geo.  
RAINSFORD  
W. O. T. W. O. T. W. O. T.



Diamond Ranch



Ranch

Rail  
or.



Robert



Wyoming

Diamond Ranch

Ramsford W. C. W.



MANCHURIA



SAN SING MANCHURIA



China

MANCHURIA



MANCHURIA Ta-hai-ko





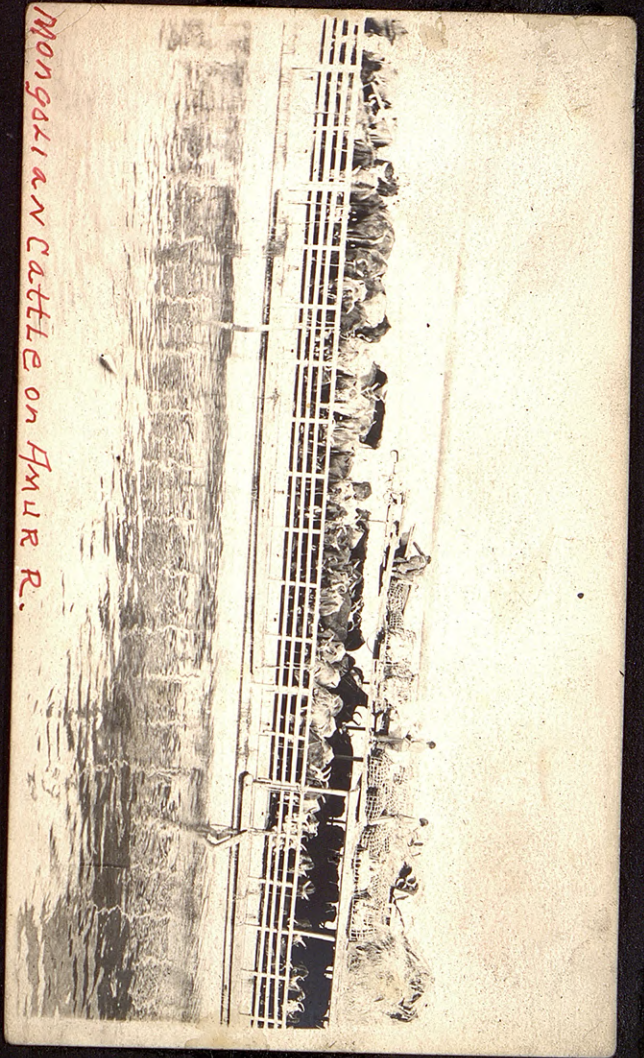


FMUR RIVER



MANCHURIA





Mongolian Cattle on Amur R.

GRANDDOR  
SIBERIA



siberia left bank



Fu-Ma-Ho, Manchuria, Amur River 1915

Prof Tuck's Train  
SIBERIA 1919





CUSTOM HOUSE - HIGHWAY MANCHUVIA

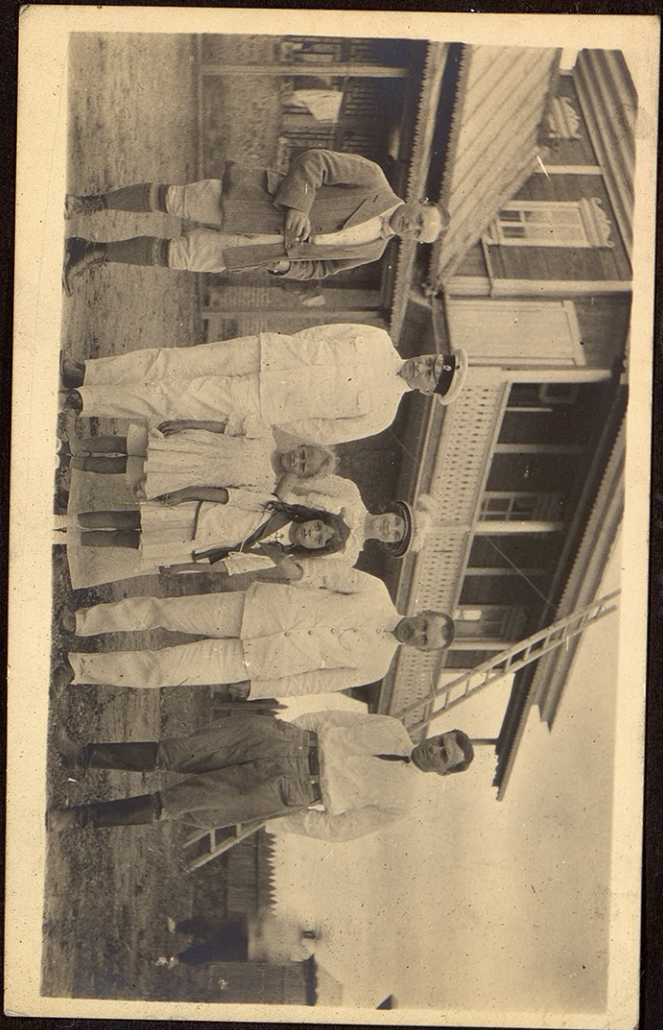
Mrs. B. Prof. d. Karchmeier, OFF. Custom



ON SINGURI RIVER

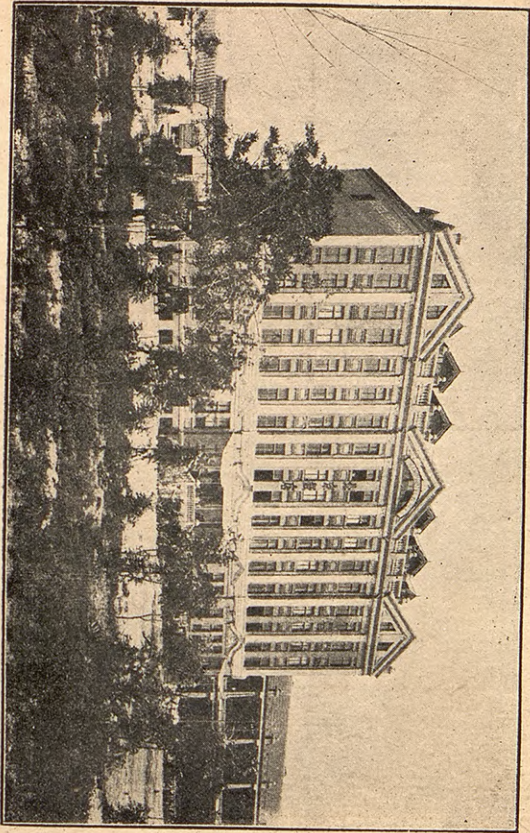


YACHMANTON GATE MANCHURIA



SUNNY  
LUSTY  
MAY  
FRI

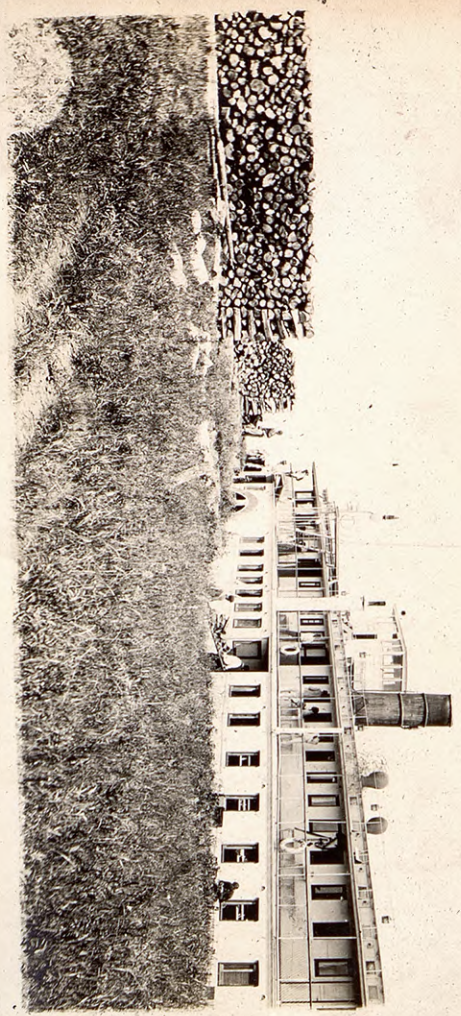
"GRAND HOTEL DE PEKIN" PEKIN



飯店

北京

L. M. MAILLÉ, Manager.



AMDR. R. Steamer Siberia



PALONS RANGH MANCHURIA



Gov



SAHSING MANDHU

5-107-4



P. 3

Speckmfe

CHUNG-TSO-LIN (center)



GEN. SWAN-TUNG-LING



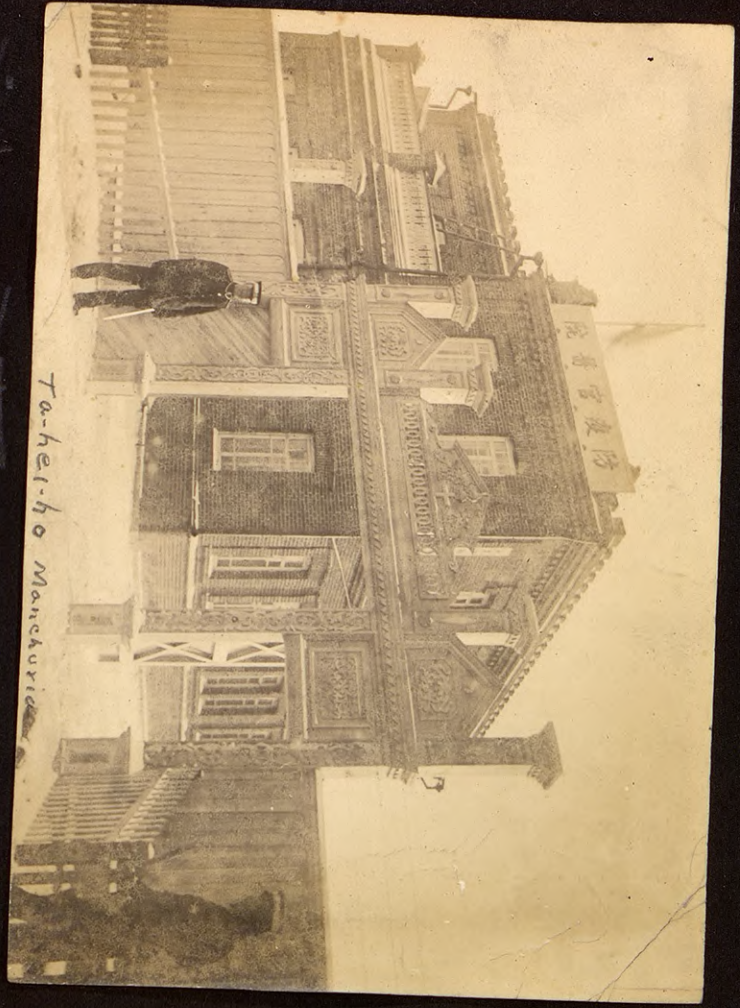


1st WIFE Tao-ti



P. Barentzens





Ta-hel-ho Manchuria

H. SUN LTAI HEI HO MING CHU

N. J. DE W. H.

1913

FT. RILEY '30

Hershberger



1914 SIBERIA



1910 F.C. Hershberger



1914 MANCHURIAN  
FCH





Siberia



Manchuria  
Russian  
Border

Camp Martha TEX. 1920



ELSIE

1930



here yesterday

Mc Edith Cavell Drive  
JASPER NATIONAL PARK





Rio Grande



PACK SADDLES



OFFICERS LINE, Fort Davis, TEX.



RIO GRANDE

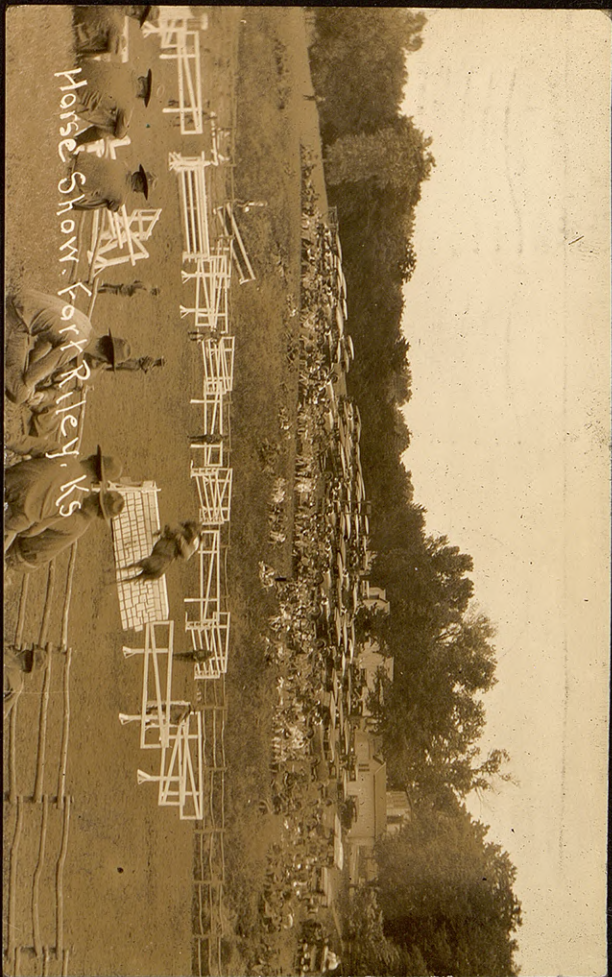
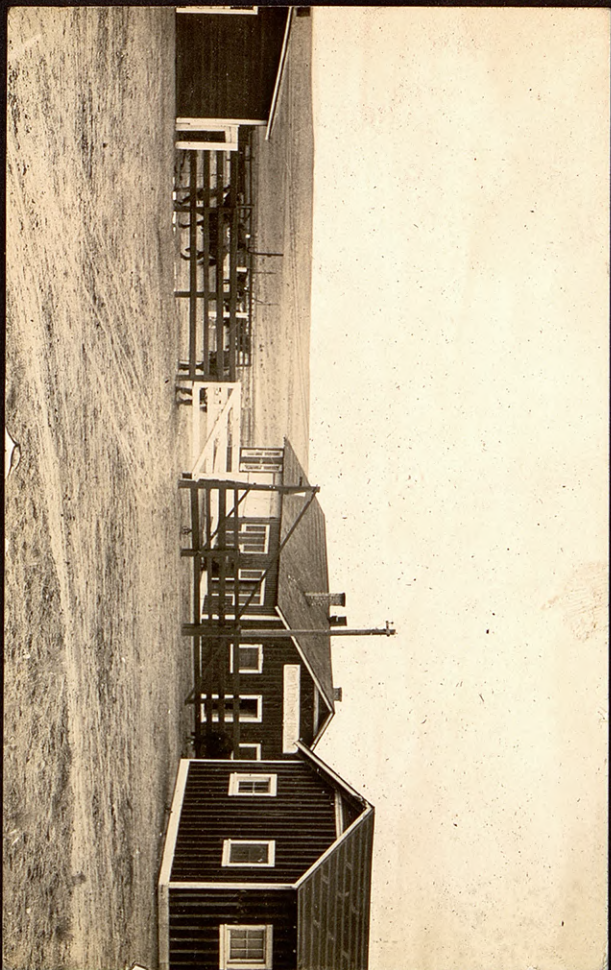
S R M  
KIELSMEIER

F C H

Camp Martha  
F. C. Hershberger



CAMP MARFA TEXAS



Horse Show - Fort Riley, KS



Maj. F. C. Hershberger, Marfa, Tex.



F.C.H.



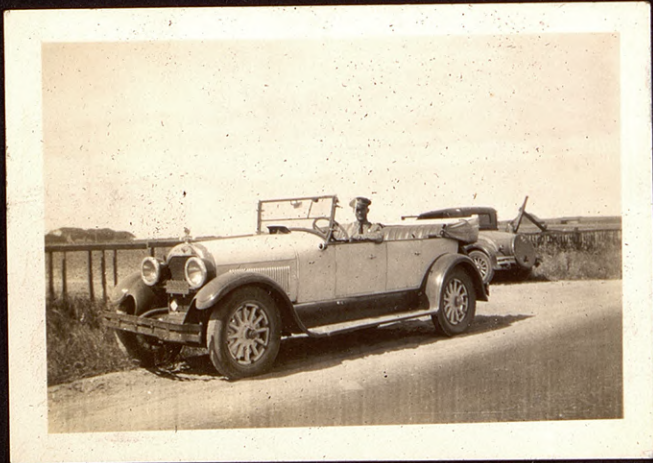
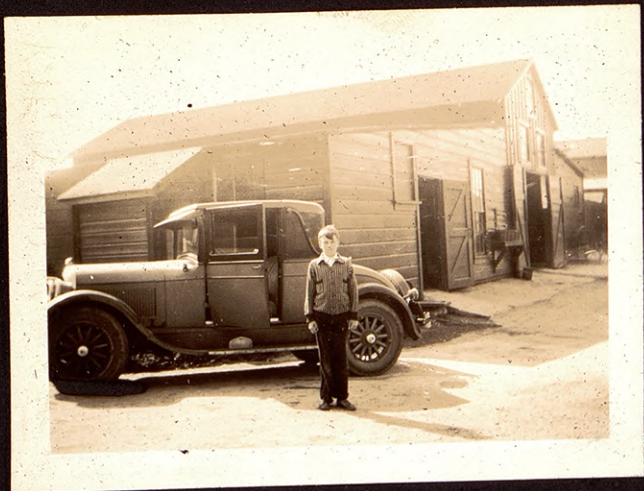


Maryta TEX 1920  
Maj F. C. Hershberger



F.C.H.

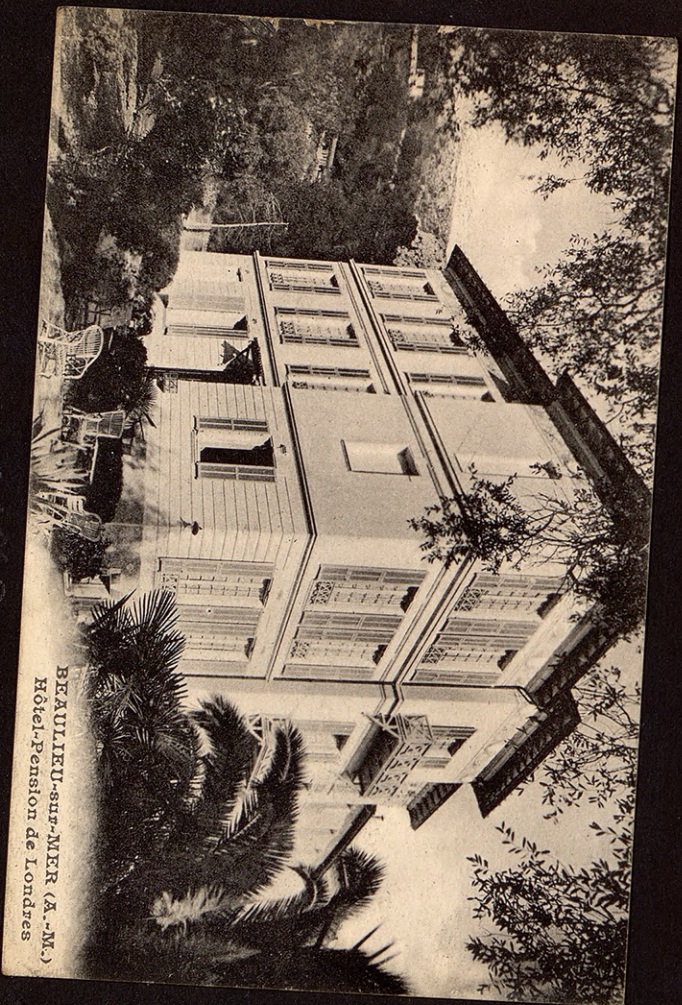




Lt. FRED FUNSTON

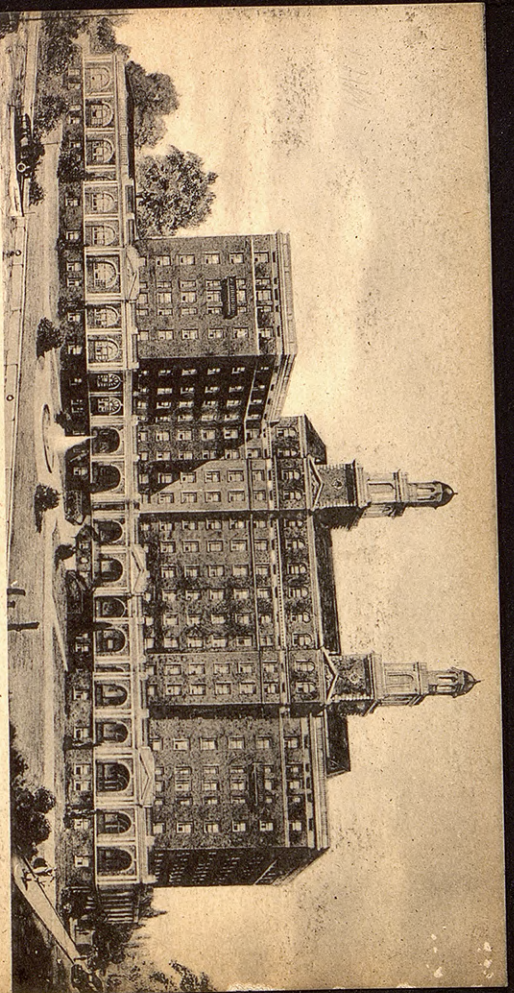


OFFICERS CLUB, FT. MONROE, VA



BEAUVILLE-sur-MER (A.-M.)  
Hôtel-Pension de Londres

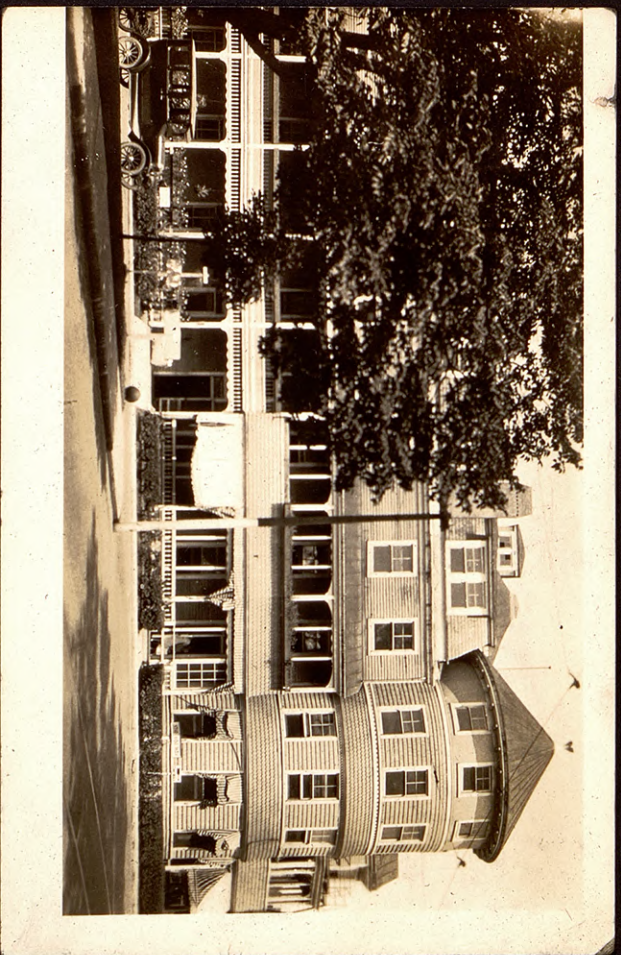




FORT MONROE, VA.

CHAMBERLIN-VANDERBILT HOTEL

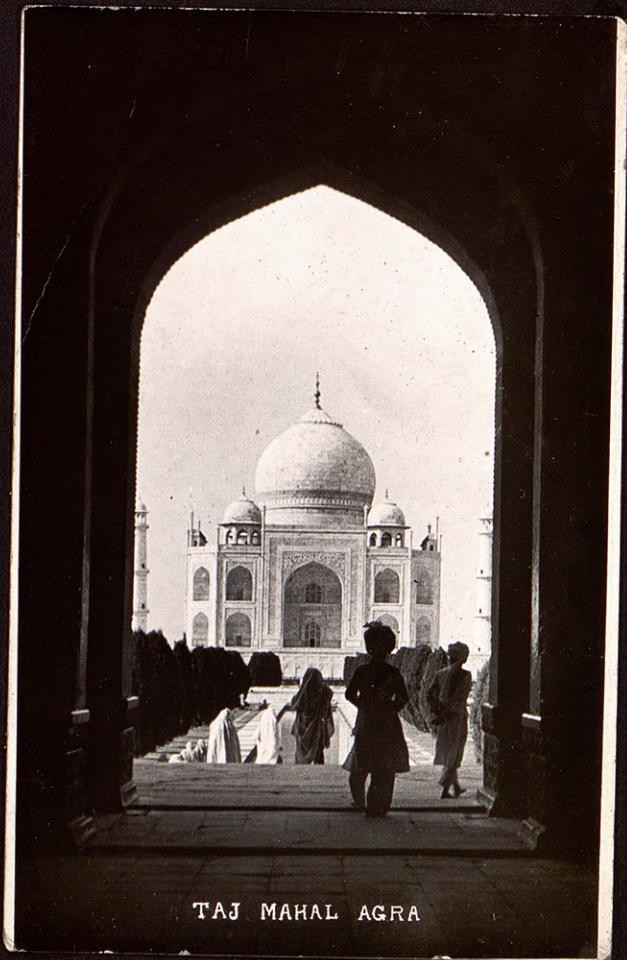
OLD POINT COMFORT



Camp Lee, Va.



E.C. Herstbarger



TAJ MAHAL AGRA



OLIVER CALDWELL



ELSIE CALDWELL

Living R. C. and Frankoff.  
INDIANA 1930

Univ of Mo. '03  
R. Smith + Hersliberg



Loretta  
of  
KANSAS



A Merry Christmas  
from  
The Big and Little Shooks!

Loretta of  
August P. RONSE



Loretta



RABORG

1919



Paul Raborg Gotal



OLIVER





A BRONCO  
Kate  
with  
Frank



FCH Walker I





CALIF

KANSAS



F  
 Y  
 B.  
 FCH  
 Libby  
 Gray

2. FRANK H.



HSAT "Meigs" in storm

PACIFIC



*Hamburg.*

*Fleet mit Nicolaskirche.*

BERLIN



MRS DONLIDEN

GERMANY 1937  
Berlin



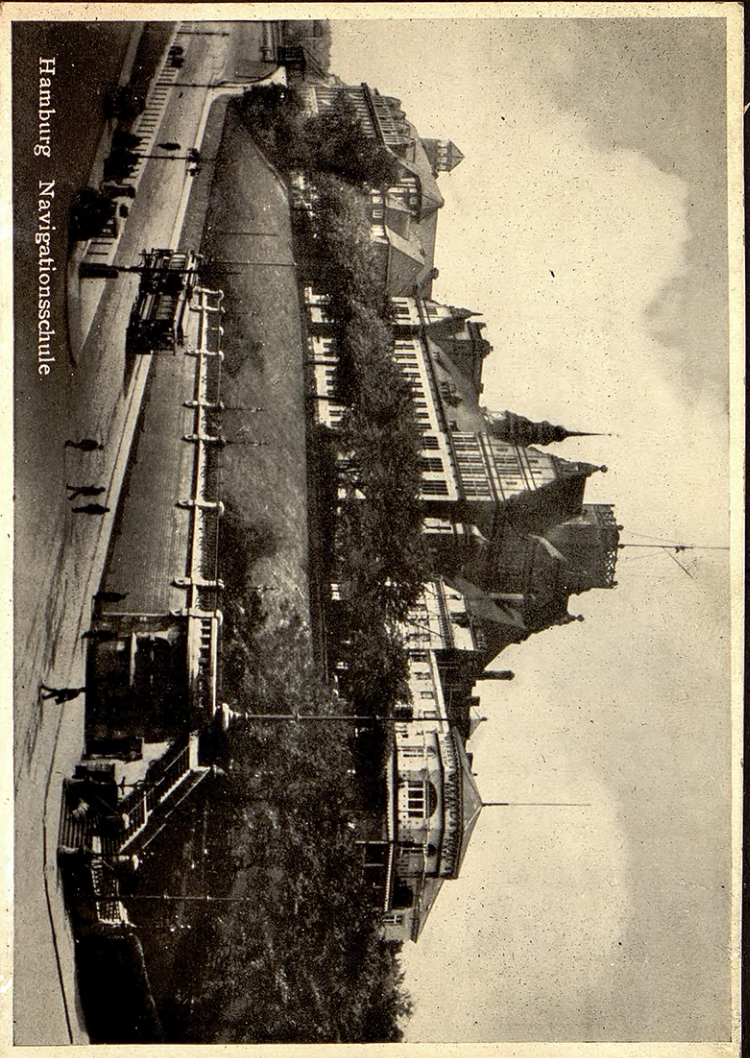
127

1937

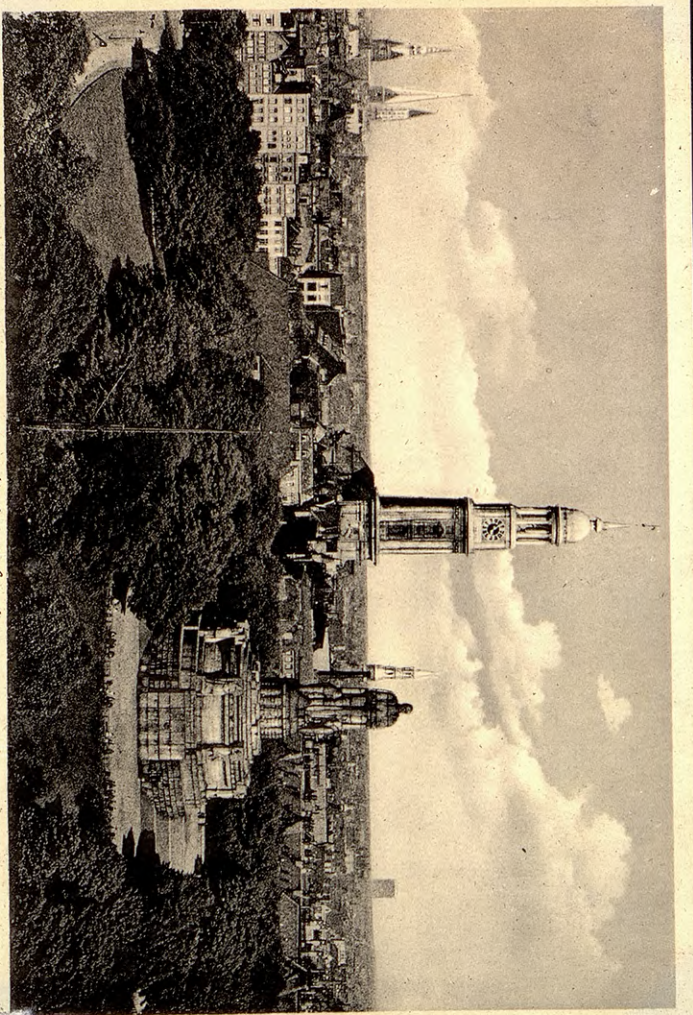
*Stamberg*

*Youngsberg and St. Mary's*



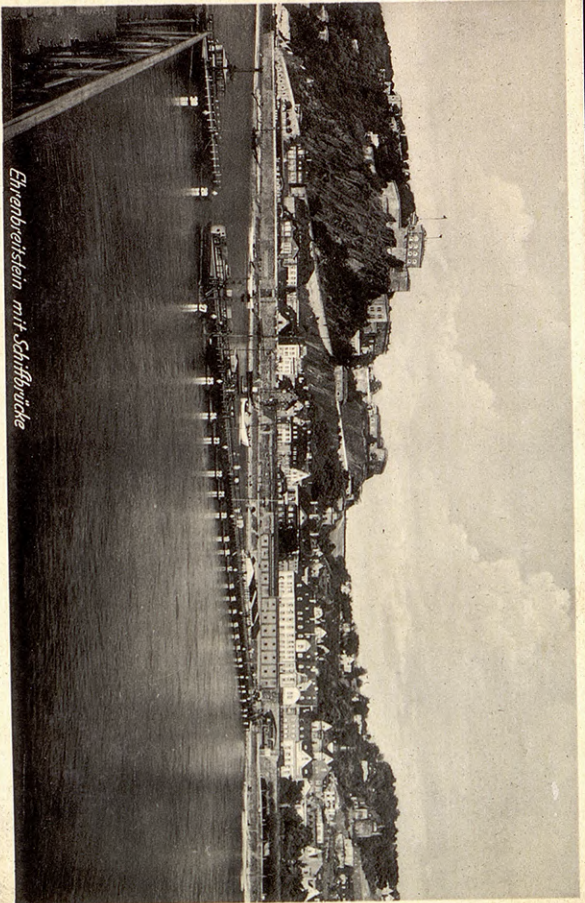


Hamburg Navigationsschule



Hamburg. Baumkondensator in Michaelskirche

COBLENTZ



*Ehrenbreitstein mit Schiffschleuse*

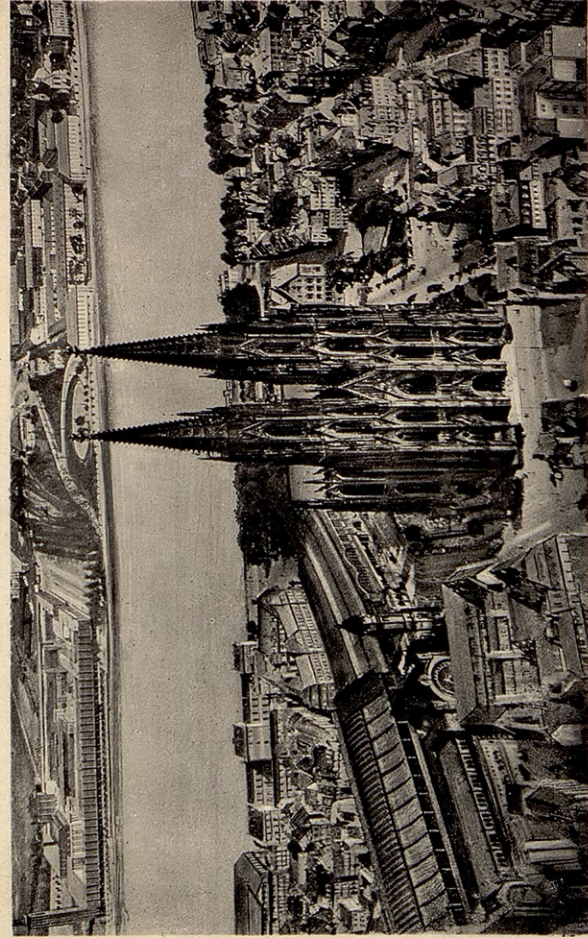


*Berlin, Alexanderplatz*





Strandpark an Main, Koblenzstr.



K 65 X

REIN GERMANY



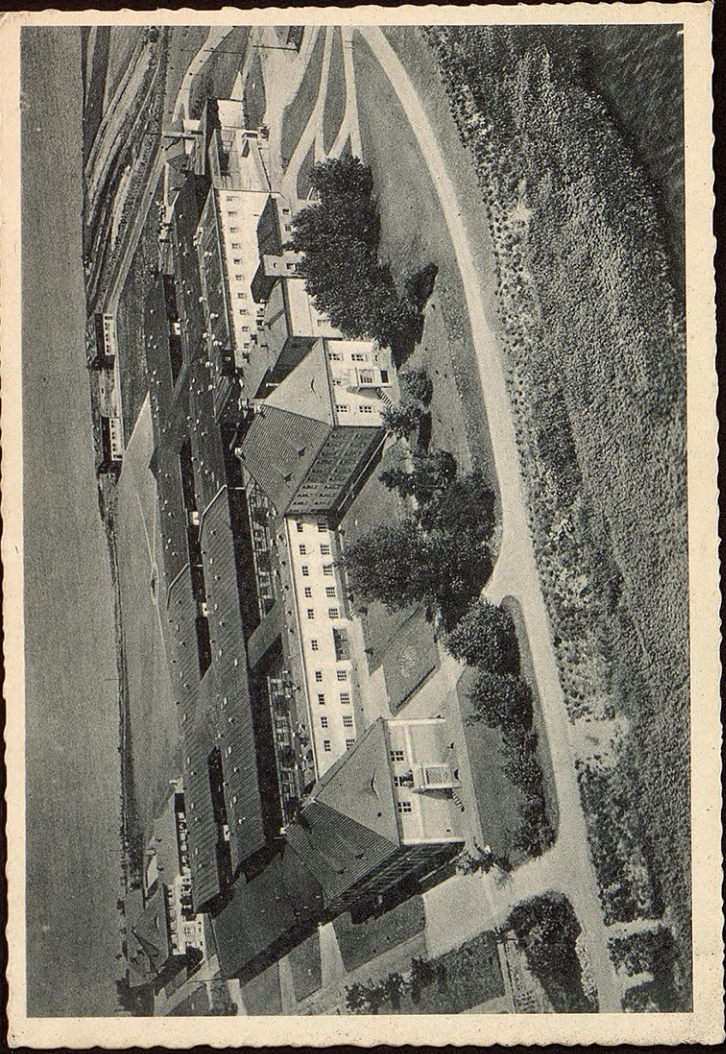


*Stralsund Orig. Flugaufnahme*





GR. FELDBERG I. T. 881 m.



CAMP MARFA Texas 1920 5<sup>th</sup> Cav



Li Finley / Hoop / Meadows / Kers / Berger / Wheeler / Morton / Adamson / Hanger



**CENTRAL HOTEL**

MIT DER NEUEN

» **BERLIN - ETAGE** «

Gegenüber dem Central-Bahnhof  
» Friedrichstraße «

**BERLIN NW 7. TEL. 11 00 31**  
Telegrammadresse: Centhotel Berlin

POSTKARTE



Four horizontal dotted lines for an address, with a solid horizontal line below the third one.





Alfred. Morgan  
Frank H. Smith  
James O. Hall

Wm. J. J. J.  
Elizabeth J. J.

Marie Louise Burgin  
Ami Antoinette

Yes  
Alma Thomas  
Ralph Bradley

REG. U.S. PAT. OFF. A  
**GIANT FEATURE MATCH BOOKS**

MADE UNDER ONE OR MORE OF THE FOLLOWING PATENTS:

PAT. NOS. 1,733,258 — 1,839,845 — 1,839,846

LION MATCH CO. INC. NEW YORK MADE IN U.S.A.







